

ReadyLift™ (Part# 66-3080) Installation Instructions

2007 GM Truck/SUV 6 LUG GMT900

Please read instructions thoroughly and completely before beginning installation.

Installation by a trained mechanic is recommended

Step 1:

Position truck on a flat surface and lift vehicle by the frame so that the front wheels are off the ground using a floor jack and jack stands or a (2) two post lift if available.

Remove the driver-side front wheel.(A) Next remove the sway bar end link.(B) Loosen but **DO NOT REMOVE** the three upper strut mounting nuts. (C)



(A)



(B)



(C)

Step 2:

Unhook the ABS line from the upper control arm.(D)

Remove the two lower strut mounting bolts.(E)

Loosen but do not remove the upper ball joint nut. A hammer may be needed to break the ball joint free. Remove the ball joint nut, the three upper mounting nuts and remove the strut from the vehicle.



(D)



(E)



(E)

ReadyLift™ (Part# 66-3080) Installation Instructions

2007 GM Truck/SUV 6 LUG GMT900

Step 3:

With the strut out of the vehicle, install ReadyLift™ kit. (G) Reinstall the strut assembly in its stock location using the new nuts provided. Then reinstall the upper ball joint nut and sway bar end link. *It may be necessary to use a pry bar to aid in the re-installation of the strut assembly, and a floor jack or jack stand to raise the lower A-arm in order to get the upper ball joint nut installed. Verify that all fasteners have been tightened to the factory torque specs and re-install wheel.

*Be sure to torque the lug nuts to the proper OEM settings



(G)

Step 4:

Repeat steps 1 through 3 on the Passenger Side of the vehicle. Follow each step closely making sure to double check the torque on all fasteners.



ReadyLift™ (Part# 66-3080) Installation Instructions

2007 GM Truck/SUV 6 LUG GMT900

Step 5:

Wheel Alignment; a Certified Alignment Technician that is experienced with lifted vehicles is recommended to perform the alignment.

*It is recommended that you have your vehicle's alignment checked whenever installing new tires.

*It is also recommended that you adjust your headlights whenever your vehicle's ride height is altered.



Before ReadyLift™



After ReadyLift™

Vehicle Handling Warning

Vehicles with larger wheels and tires will handle differently than stock vehicles.

Take time to familiarize yourself with the handling of your vehicle.

DRIVE SAFELY and WEAR YOUR SEATBELT

Installation Warning

Always wear proper safety equipment and use the correct tools when installing any suspension upgrade. Make sure vehicle is on a flat surface and you are using jack stands or a lift rated for the weight of the vehicle.

Warning! This ReadyLift™ Leveling Kit is designed and engineered to level out a stock vehicle with no prior modifications. The use of this kit along with items such as rear lift blocks or spacers, add a leafs, airbags, suspension lifts, body lifts or any other type of lifting accessory shall be done at the vehicles owners risk and will void any and all warranties in effect or implied by ReadyLift™

ReadyLift™

1000 Bristol Street North, Suite 17-168, Newport Beach, CA 92660

Toll Free (800)549-4620 Local (949)515-0795 Fax (949)515-0655

ReadyLift™ (Part# 66-3080)

Fender Modification for clearance of 285/70/R17
Tires mounted on 17x8 wheel with 4.5" backspace.

2007 GM SUV/TRUCK GMT900 PLATFORM

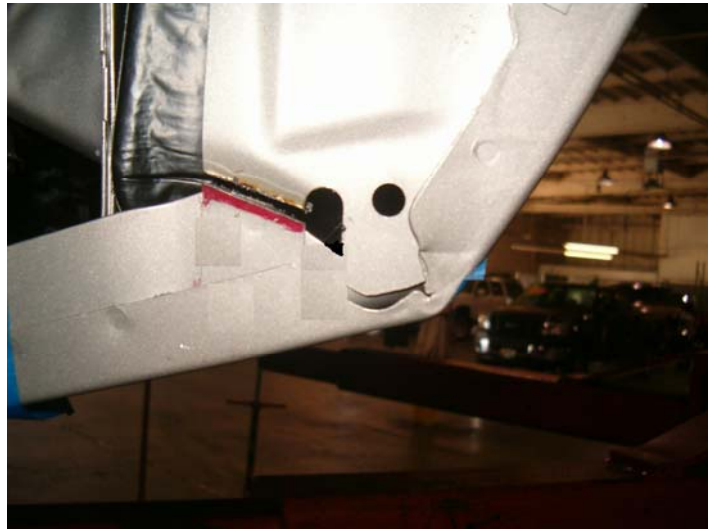
Please read instructions thoroughly and completely before beginning installation.
Installation by a trained mechanic is recommended.

Step 1:

Position truck on a flat surface and lift vehicle by the frame so that the front wheels are off the ground using a floor jack and jack stands or a (2) two post lift if available.

Critical point: This modification should only be done when you can allow 24 hours for the drying time needed for primer and undercoating. If you fail to take your time in prepping, priming and undercoating the fender area as described below will result in a unsatisfactory looking finished product.

Start by removing 2 factory screws and 2 plastic x-mas tree fasteners located on the bottom of the front fender rear plastic liner. (Insert A shows area to be cut with saws-all or die grinder.)



(A)

Step 2:

Critical point: Make sure the bottom fender bolt is tight prior to flattening inside fender to avoid fender movement. Take note of the spacing between the fender and the front doors. Make sure you haven't reduced this spacing or the door will make contact when hinged open.

2. Using a plastic or rubber mallet you want to slowly bend the inside of the fender until it flattens back.
(Insert B shows the inside of the fender bent back with measured length from the bottom of the fender)



11/08/2006

(B)

ReadyLift™ (Part# 66-3080)

Fender Modification for clearance of 285/70/R17
Tires mounted on 17x8 wheel with 4.5" backspace.

2007 GM SUV/TRUCK GMT900 PLATFORM

Step 3:

3. Mask the fender starting at the bottom corner and toward the bottom fender bolt. Lightly scuff the fender area cut and down to the bottom of the fender. Using a paint primer, prime scuffed area and let dry. Once dry, undercoat on top of the primed area. Let undercoat dry before removing masking and fastening plastic liner onto the fender.

Disclaimer:
ReadyLift assumes no responsibility and/or liability for any modification to your vehicles inside fender well/wells. It is the vehicle owner's sole responsibility to ensure that all precautions are taken when performing any body or mechanical work. These instructions are only recommendations and not requirements. This type of work should only be performed by a licensed professional.



(C)



(D)